

Ashburnham Estate Properties to rent

**STRUTT
& PARKER**

From time to time properties become available to rent on the Ashburnham Estate. If you would like to be contacted when something becomes available, without any obligation, please do let us know. Contact the Land Agent, Isabel Swift on 01273 407007 or email: isabel.swift@struttandparker.com for this and any other Ashburnham Estate matters.

JF Stoneworks

Specialists in stone

- NEW MEMORIALS
- CLEANING & RENOVATION
- ADDITIONAL INSCRIPTIONS
- GRANITE & MARBLE WORKTOPS
- STONE BUILDING RESTORATION
- DOMESTIC STONE WORK

No. 2 Kingswell Estate, Beech Farm, Netherfield Hill, Battle,
East Sussex, TN33 0LL Showroom: 01424 774497
www.jfstoneworks.co.uk Email: enquiries@jfstoneworks.co.uk

Eve Ashley

Couple Therapist
Child and Adolescent Therapist
Brief and long term therapy offered
Member of ACP and BPC

Tel: 07889 530213

info@eveashley.co.uk
www.eveashley.co.uk

Holiday Cottage on the Isle of Wight

- ❖ Quiet, but not isolated location
- ❖ Sleeps 4 plus 1
- ❖ Easy access to the beach
- ❖ Lots of lovely walks
- ❖ Ideal place to relax and unwind
- ❖ Garden
- ❖ Free WIFI

For more details, prices, pictures and
full information, go to
www.applehousetotlandbay.co.uk



ETB four star Gold Award



Holiday Flat available

At Penhurst, near Battle
For long or short breaks
Two bedrooms, sleeps four
Two well-behaved dogs welcome

Contact cottages4you.co.uk
0345 498 6900 Ref. 29197
The Granary, Penhurst
www.cottages.com

J. Birrell

Oil Fired Boilers, Aga
and Rayburn
Servicing and Repairs
22 Years Experience
Fully Insured
Home 01580 880804
Mobile 079077 95603

Ashburnham and Penhurst Parish Magazine February 2017



Cover picture by Ieva Clark

Please send contributions for the March issue by Friday 3rd February
We reserve the right of refusal & the right to edit any articles

Plough Sunday Service

Thanks to everyone who supported the The Plough Service on 8th Jan, from use of the barn, to helping set out the chairs, cooking sausages, making soup and cakes and doing lots of clearing up! We took an offering for The Royal Agricultural Benevolent Institution and raised £317:10 towards their important work supporting those in the farming community. RABI say this about their work, "As a welfare charity it's people we support - not businesses. We help farmers and farm workers of any age, provided they currently work in farming, or used to work in farming and have retired through age, illness or disability. We also help their dependants." Check out their website, www.rabi.org.uk for more information.

Plough Sunday is traditionally a chance to bless the plough and wish our farming neighbours well for the seasons to come.

Thanks for all your support,
Ashburnham Church and Ashburnham Chapel

Off the Shelf

Almost every household in the country has a Bible on the shelf somewhere. But very few of us have ever read much of it – let alone all of it. It's too long!

I can't understand it! Where do I start?

If you would like to know more about the make-up of the Bible, what's in it and why, and how to make a start with reading and enjoying it, then why not come along to our short course, starting in February.

You'll find a relaxed session, with coffee and refreshments, and a very down-to-earth and simple-to-understand introduction to the Bible. There will be others who know even less than you, and no pressure to continue if you find the course is not for you.

For more information, and to book in for the first session, contact Jennifer Oldroyd on 01323 832748, or email jennifer.oldroyd@btinternet.com.

Chapel News

We trust you have all had a wonderful Christmas and are looking forward to a peaceful, healthy 2017. This unfortunately will not be the case for many parts of our world – and indeed our own country – but let's continue to pray, both personally and at our prayer meetings, that God's will be done, and his kingdom to come.

Our Carol Service raised £272 for the children's hospice Chestnut Tree House.

The Chapel will again be holding 3 Healing Services during 2017. The dates for these are 30th April, 30th July and the 22nd October full details will be available on our website shortly, but please mark these dates in your diaries.

A full report of the Plough Sunday Service can be seen on our website www.ashburnhamchapel.co.uk



Registered with the General Osteopathic Council and the Institute of Osteopathy

East Sussex Osteopaths offer clinic appointments in Dallington and Heathfield

To book an appointment, please call **07762 576 492**

www.eastsussex-osteopaths.co.uk

Calls for complementary advice also welcome

Meridian Marquees

We provide a complete service for the ultimate party, wedding or corporate event.

Our Marquees are an ideal venue in all seasons. We provide heating, stunning interiors, a wide range of furniture, dance floors, stages and much more.

For a free site visit and quotation please contact us on

01424 893757

07976 704632

dave@meridian-marquees.co.uk



East Sussex Massage

Sarahjane Prince Cert ed AoR MSMA
(NHS registered)

Appointments in Dallington and Heathfield

eastsussexmassage@yahoo.co.uk

www.eastsussexmassage.co.uk

Tel: **07762576495**

Sports massage Hot stone massage
Aromatherapy Reflexology
Swedish massage Fertility and delivery
reflexology

Working from the rooms of East Sussex Osteopaths

Organic Hay for sale

Small bales made in July 2016

No ragwort.

£3 per bale

Delivery available

Call 01424 838403



Seasoned hardwood logs
available

Barn Stored

For delivery details and a quote,
call David on 07799 008631

Shipping Container to rent
suitable for all types of storage

at secure site on the outskirts of
Battle/Hastings
20'x8'x8' (1280 cu.ft)
6mx2.5mx2.5m (37.5 cu.m)
£23 per week
For more information ring
Fay on 07860 113413

ROB DEDMAN

HOME MAINTENANCE

All work undertaken in and
around the home

Painting and decorating
Bathrooms and tiling

Tel: 01424 774764
Mob: 07976 741950
E: robddedman1066@gmail.com

References available
Fully insured

DEEJAY

Carpentry and Joinery
Props: DF & JC Tough
Windows, doors, kitchen cupboards
conservatories, all maintenance

Telephone: 01424 438814
Mobile 07977 859582

Email: deejaycandj@hotmail.co.uk

Tom Gooders Tree Surgery

Fully qualified tree surgeons

All aspects of tree work
professionally undertaken

07817 572291

PRIVATE TUITION
MATHS, SPANISH, LATIN
KS3 and GCSE

**COMPASS
TUTORING**

NICKY BISHOP M.A.
Ashburnham 01424 892474
www.compasstutor.co.uk

Ashburnham Sports Pavilion

Now with heating and full
kitchen facilities.
Available for hire for all
recreational activities.
Charges for village focussed groups
reduced to £15 per session.
Hirers liability insurance in place.
Please contact Brian Holdstock on
01323 832082



Mallards

For all your soft furnishing needs
Curtains, blinds, pelmets etc

Call Sharon 01424 892029

Sad Farewells

Nikki and I will miss waking up to sheep in our back garden!
In our two years here we have really enjoyed getting to know rural life and despite being a vicar for 28 years many experiences have been new to us. For example a Puppy Blessing service, and Plough and Rogation Sunday services on local farms. Also with the church of St Peter's sited within the grounds of Ashburnham Place we have had many interesting encounters with various Christian groups and believers from around the world, and I have been glad that our church has been able to host some of these groups.

We are sorry that we are leaving much sooner that we would have hoped; Ashburnham and Penhurst are such unusual and special villages. A population of 350 but with three churches and two Christian centres. The Lord is much addressed in this small part of South East England.

We will miss you and pray that you will continue to know God's grace and riches.
Best wishes


Vicar



Plough Sunday Service

The Revd Paul & Nikki McVeagh
The Granary,
Agmerhurst Farm,
Kitchenham Road
Ashburnham, Battle
TN33 9NB
01424 532443
pmcveagh@aol.com

Starting on the 16th February, the Ashburnham Church House Group that has previously met at The Granary, will now be meeting at Fay's home, Brakes Coppice Farm, Battle, TN33 0SJ. There is plenty of room for all and easy parking.

<p>Pub Quiz at the Ash Tree Inn Tuesday 7th February at 7.45pm £1 entry, £5 set meal 01424 892104 Join us for a battle of wits!</p>	<p>After School Club Meets in the Village Hall from 4pm - 5.15pm on Thursdays during term time. If you have a primary school aged child, why not take them along? Contact Janet Peters on 01424 892311</p>
<p>Village Lunch Wednesday 15th February at the Village Hall Lunch is cooked for any older residents in our villages who would like a bit of company and a delicious meal. Transport can be arranged. For more information or to book a place, give Janet a ring on 01424 892311</p>	<p>The Ashburnham and Penhurst Gardening Club is meeting on Monday 27th February in the Church Hall Ashburnham Place at 7.30pm. Our topic is "Finest Gardens Through The Year" New members are always welcome. For details see our web site www.ashpengc.org.uk</p>
<p>The Art Group meets at the Pavilion every Thursday morning from 10am until 1pm. February's tutored session is on 23rd February when Sedlescombe artist, Mark Fisher will be joining us Guests are welcome at a drop-in charge of £4 on non-tutor days or £8 for tutored sessions. Arty hints, friendly chatter, and home-made cake! For more information see the Art Group page on the website.</p>	<p>ASHBURNHAM & PENHURST WI <i>February's Topic</i> Kent Air Ambulance Monday 20th Feb 2017 7.15 pm for 7.30pm start  For more details see our webpage at https://ashburnham-penhurst.net/</p>

Corner Carpet Company

We supply and fit
Carpets, Vinyls,
Laminates, Real Wood,
Safety Flooring
for every location
and budget

- * Free estimates and advice
- * Fast friendly service
- * Expert fitting by our own fitters
- * Home selection service
- * Domestic and commercial
- * Competitive prices
- * Fully insured
- * All work guaranteed
- * Over 500 rugs in our showroom

10% Discount with this ad!

Customer satisfaction is very important to us and much
of our work has come from recommendations and
repeat orders since we opened in 1998

Our showroom is at 36 London Road, St Leonards on Sea
(opposite Boots)

Alternatively you can contact us
and we will gladly bring samples to you!
Just call **01424 446222**

www.cornercarpetcompany.co.uk
info@cornercarpetcompany.co.uk

the PlayCafé
‘too small for school’

Wednesday mornings (term times), 10am till 12 noon
 Adults must be accompanied by at least one baby or toddler!

You can find us at Ashburnham Church Hall, in the grounds of
 Ashburnham Place, Battle. TN33 9NF
 You can park in the main car park and the Café is signposted from there.

All are welcome to come for coffee, chat and play.
 Plenty of toys, messy creative play, singing and outside fun and
 a quiet corner for the tiny tots.

Give Margaret a ring on 01424 777011. If she's not in,
 leave a message and she will ring you back as soon as she can.
 Supported by St Peter's Church, Ashburnham

MI News

Twenty one bowlers swung their way
 through a very enjoyable evening at the
 David Lloyd Bowling Centre, Eastbourne
 before Christmas. There were members
 of MI, WI and those of uncertain
 membership. Three winners emerged....
 Leo Woning, Ian Roberts and Richard
 White...it must have been a height thing
 on the night. The "strike-rate" wasn't
 quite up to Southern Rail's frequency but
 certainly some of the bowling was
 impressive!

Yours truly was relieved that everyone
 got a game this year after the 2015
 debacle.

The bowling was followed by an Italian
 meal in Eastbourne, a busy and tightly
 knit affair where members of the villages
 bonded well in tight conditions.

In the next mag there will be more news
 regarding opportunities for local men to
 go AWOL for an hour or two every now
 and then. The next MI is at the Ash on
 Tuesday 14 Feb...ah Valentines!...
 perhaps I should be organising an
 extraordinary MI complete with candlelit
 tables and a jazz pianist?

For more information ring Richard
 01424 893130

Book Groups

Our February Book is "Notes From An
 Exhibition" by Patrick Gale.

When troubled artist Rachel Kelly dies
 she leaves behind an extraordinary body
 of work - but for her family there is a
 legacy of secrets and painful
 revelations. Piecing together the clues
 of her life - as artist, lover, mother, wife
 and patient - takes the reader from
 Cornwall to Canada across a span of
 forty years. What emerges is a tender
 story of enduring love, and a portrait of
 a family coping with the sometimes too
 dazzling brilliance of a genius.

Both groups are reading the same
 books, so you can choose whichever
 session suits you best, or even come
 along to both.

The evening book group will meet at,
 1 Old School House
 on Tuesday 28th February at 8pm.

The afternoon book group will meet
 at Street Cottage (opposite the Ash).
 on Friday 24th February at 2pm

If you would like to borrow the book,
 please call Jay on 01424 532972 or
 Nicky on 01424 892474

Table Tennis Club

is in need of new members!
If you fancy joining, head to the
Village Hall on Wednesdays at 7.45pm

Call Janet on 01424 892311
 for more information

On behalf of the residents at The
 Pound, and many other people in the
 village, we would like to thank Clive
 O'Sullivan very much for the new
 mirror that he has set up to replace
 the old one at the junction at The
 Pound. It is in an excellent position,
 and makes such a difference to us all -
 and probably saved lives!
 Thank you, Clive!

100 Club

The 100 Club will continue in 2017.

For just £12 per year, you can help
 support the New Village Hall project
 and win a cash prize!

To join up or renew your
 membership please ring Robin on
 01424 892674.

*Ashburnham Church
invites you to a*



*at
ASHBURNHAM PLACE
On
1st April 2017 at 8.30am*

*Rev Richard Steven
Vicar of Herstmonceux & Wartling Parishes*

will be talking about

“There and Back Again, a Vicar’s Journey”

Richard was converted in the bush of Western Australia in 1975. He was ordained in Rochester in 1999 after being a dairy farmer in West Kent. Richard’s Curacy was back in Western Australia where he worked in a Parish the size of Wales. Richard now has two Parishes, four children, four grandchildren and sixteen chickens!

*To book your place in advance, please contact:
John French 01424 892580 or John Cormode 01424 848415
john.cormode@btinternet.com*

A donation on the day of £5 would be welcomed



C. Waterhouse & Sons
YOUR LOCAL INDEPENDENT FAMILY
FUNERAL DIRECTORS

CELEBRATING
90
YEARS
1926 - 2016

Caring and personal service by a family owned company that has maintained its traditions of discretion, and professionalism over 3 generations.



Golden Charter
Funeral Plans



High Street, Burwash, East Sussex, TN19 7ET
www.cwaterhouseandsons.co.uk email: funerals@cwaterhouse.co.uk

24 Hour Service - Please call (01435) 882219

Freelance Bookkeeper/Administrator

Reliable and organised bookkeeper /office administrator with excellent computer skills available to provide professional administrative support for small businesses and home offices

- ✓ Bookkeeping through to trial balance and management reporting
- ✓ Flexible working times
- ✓ I can visit your premises and work on your computer, or take away the work and use my own software
- ✓ Computer training at your desk also available

References available

For a no-obligation chat, contact Sarah White on 01424 775191 or visit www.telhamtrainingltd.co.uk

EDWARDS GARDEN SERVICES



Nick Edwards

Tel 01424 775863
Mob 07717 062570
Email nickedwards1197@btinternet.com

Angie Nettle MBACP

*Person Centred Counsellor
General counselling,
Bereavement Therapy, Pet
Bereavement and Equine
Assisted Therapy*

07817 997 922



Opening Hours:

Monday: Closed

Tuesday – Sunday: 10.30am-5.00pm

The Orangery Tea Room is open in the beautiful 18th century Capability Brown designed orangery at Ashburnham Place.

Join us on Facebook for regular updates and offers

www.facebook.com/orangerytearoom

Orangery Tea Room, Ashburnham Place, Battle, East Sussex, TN33 9NF.
Tel: 01424 894203 Email: orangery@ashburnham.org.uk

Hydra Cleaning Services

Commercial and domestic
Fully insured

- Windows – interior and exterior
- Gutter clearance
- Fascias and soffits
- Weatherboarding
- Solar panelling

All cleaned with our unique pure hot water system

Call James for a free quote,
Tel: 07515460008
Email: hydracleaning@mail.com
www.hydracleaning.co.uk

WILL WRITING SERVICE

**Usual fee per will
£95 plus VAT**

Free wills brochure
available on request
(Lasting Powers of Attorney
from £235 + VAT)

Tel: 01323 460395

Barry & Co Solicitors

*Bay Terrace, Pevensey Bay
East Sussex BN24 6EE*

PROBATE ADVICE

No obligation legal advice on
initiating Probate and Estate
Administration

Tel: 01323 768382

Or contact
rachel@barryandco.org

The Filling Station at Ashburnham Place



The Filling Station is an informal way of expressing the Christian Faith
We meet on the 2nd Tuesday of every month for Fellowship,
Worship, Teaching and Prayer

Following our break in January the **Filling Station is back on the 14th February**. We will be meeting in the the Prayer Centre starting at 7.15pm with delicious cakes and coffee.

Brian Mills is talking about 'The Baptism of Love'

Come and join in the Worship and be blessed by the Prayer Ministry.
For more details contact Catherine on 01580 881816 or
catherine@duggleby.com

Pastoral Care for Ashburnham

“Peace I leave with you; my peace I give to you. I do not give to you as the world gives. Do not let your hearts be troubled, and do not let them be afraid.” — John 14:27

Sometimes we face particular crises in our lives and we need help and support. As a Church St Peter's seeks to reflect the healing compassion of Christ, and through our Pastoral Care team we aim to provide comfort and support, to those who are sick in hospital or at home, or recently bereaved, or who are isolated through a lack of mobility or old age, during times of physical, emotional or spiritual need. We can offer contact with a member of our pastoral team who can visit, as well offering prayer, home Holy Communion or hospital visiting if required.

We firmly believe that prayer does have an effect, and we welcome requests for prayer. We have two prayer points – one outside under the main Welcome notice at the foot of the church pathway and the other inside the church entrance door. There are cards and pens available for use. You are also welcome to contact a member of the pastoral team direct. Requests will be prayed for on a regular basis and held in strict confidence.

Please get in touch with us for an initial discussion if you would like our help.

Vicar: Rev Paul McVeagh 01424 532443 pmcveagh@aol.com (until 12th February)

Pastoral Care Coordinator: John Cormode 01424 8484125 john.cormode@btinternet.com

Deputy Care Coordinator: Storm Hann 01424 893130 info@penhurst.org.uk

Other team members: John French, Catherine Duggleby, Jennifer Oldroyd, Richard Hann.

Attention, Gentlemen of a Certain Age

Apparently, I have cancer of the prostate. I tell you this, not to seek any sympathy, (although, if you should catch me in The Ash and force a pint of Harvey's on me, I would not resist), but to highlight a potentially fatal illness that can so easily be dealt with. It all started with me going to the doctors with a persistent cough. One thing led to another and before I knew it, the doctor is slipping on the old Marigolds, asking me to bend over and inserting a digit in my nether regions (I do hope you are not reading this, eating dinner). She didn't like what she saw, or in my case, felt. So it's off to see the consultant, followed a couple of weeks later by an MRI scan and a biopsy. Be warned. During the biopsy, they have a 'distraction' nurse sitting alongside, engaging you in conversation. The word 'distraction' should have rung alarm bells, but it was not until they'd pulled me down from the ceiling, that I understood why 'distraction' was needed. Still, all in a good cause....

A couple of weeks later, it was confirmed that I had the cancer, but fortunately for me, in a very low form. Interestingly my blood PSA (me neither), showed perfectly normal, so not always a good marker. I've now embarked on a course of hormone treatment. The hot flushes will be handy in the winter, I've already booked myself in for a fitting at Agent Provocateur, to deal with the man boobs and Helen has threatened to to hide my chainsaw, when the mood swings kick in. All this has to be followed by a seven week, five days a week, course of radiotherapy (at Maidstone, would you believe?)

I understand that a couple of men in the village are suffering from this and I have the greatest sympathy with you and any other sufferers. So, if you are over fifty and want peace of mind, at least take the blood test, if not the Marigold test!

Ronnie King



Ashburnham Doggy Day-Care and Boarding

At work or out all day?
Drop your dog off with me for
care and walkies!

8am to 5pm - £20
Half day sessions £10
Overnight care also available

Louise Edwards
Timberyard Cottage, Ashburnham

Call 01424 893239
Or mobile: 07818 086004

TROUBLE WITH MOLES?



Contact **Tim Dennis**
your local mole catcher

Fully equipped for domestic and
agricultural work.

I also control all other vermin.

No poisons.
Fast and friendly service.

Tel: 01424 732818
Mobile: 07505864063
Email: tjwoodsman@aol.com



The Grounds and Gardens at Ashburnham Place

February will be busy in the
gardens at Ashburnham, as it is
when all the climbing and
rambling roses are pruned! It is
quite a job but worth doing for a
lovely show of colour in June -
do come and have a walk along
the terrace then to see them in
their full glory.

If you come and visit the
Orangery, you might still catch
our Camellias in flower, they have
been growing there since 1833,
some of the first to be planted in
England and still looking
beautiful!

Yoga at the Pavilion

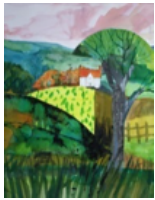
General classes held on:

Mondays 9.15 to 10.30am
Thursdays 5.30 to 6.45pm
(9 January to 2 March)

All are welcome, mats provided

Cost £9 per session

For more information please
contact Helen on:
01424 893033
07856472224 or
yogahoadie@gmail.com



Hello lovely people of our villages!

May we all experience God's peace in some way in this coming year. We have a full programme of events and retreats lined up in 2017 as well as opportunities to come and put your feet up in this lovely old (but loved!) building.

We have a full programme of "Relax, Play and Create" days scheduled. The first of these is with Andy and Liz Cottingham on 8 February. They will be doing simple jewellery making as well as burning designs on to wood. The cost of the day with lunch is £10 for magazine holders and do watch out for other Creative days coming up during the year as we have a number planned with different leaders.

There is also another one day event taking place on Saturday 18 February led by Phillipa Winton called "Taste and see that the Lord is good". This is a day to explore God's love for us in creative ways!

We look forward to welcoming lots of locals here over the coming months.

Richard and Storm

01424 892088

www.penhurst.org.uk

info@penhurst.org.uk

Thanks to Cynthia for spotting this in a local magazine:

What's It Worth?

What's a village worth? This small notice, attached to the fence surrounding the church at Penhurst, near Battle, gives the entry for the village in the Domesday book of 1086. It's described as being half a hide in area (which meant about 60 acres), had two ploughs, two villeins to work them, an acre of meadow, plus a wood which contained two hogs. Its value in total then? Fifteen shillings - so 75p in today's money!

Last chance to book your place!

Ashburnham Church invites you to a



at

**ASHBURNHAM PLACE On
4th February 2017 at 8.30am**

Ed Jones

Team Leader & Pastor of Battle Baptist Church

*will be talking about
"Dead Man Walking"*

In 1994 Ed's parents were told by doctors not to expect him to survive.

Come and hear the story about how God had other plans

To book your place in advance, please contact:

**John French 01424 892580 or John Cormode 01424 848415
john.cormode@btinternet.com**

A donation on the day of £5 would be welcomed

If you have any articles, notices or information that you would like included in the magazine; or if you have some artwork you would like considered for the cover, do get in touch with me. You can either give me a ring on 01424 532972 or send an email to jay.ashworth@btinternet.com
Thanks, Jay

Parish Magazine Contact Details

If you would like to advertise

phone Jennifer on 01323 832748 or
email jennifer.oldroyd@btinternet.com

If you have a question about delivery

contact Catherine on 01580 881816

To submit articles or village notices

contact Jay Ashworth on
01424 532972 / 07876 484945 or email
jay.ashworth@btinternet.com

For more information about Church Services contact

Ashburnham Church

Catherine Duggleby 01580 881816

John Cormode 01424 848415

Penhurst Church

Roger Burfoot 01424 838403

Ashburnham Chapel

Fay Ramsden 07860 113413

01424 830078

For a full programme of events at Ashburnham Church, check the website:
www.ashburnhamandpenhurstchurches.org.uk



If you have food or toiletries you would like to donate,
there is a collection point in Ashburnham Church

"105" IS THE NEW NUMBER TO CALL IF YOU GET A POWER CUT

105 is a single helpline service for householders to report power failures or safety concerns, or to get information during a blackout.

Calls to **105** are **free of charge** and will put you through to your local electricity network operator. You can call **105** from landlines and most mobile phones.

Battle Area Flexible Bus

*A booking needs to be made in advance -
call Peter (01424 - 772001)*

Ashburnham to Eastbourne - route

B82: Thu 19 Jan, 17 Feb, 16 Mar

Ashburnham to Tenterden/Ashford -

route B84: Fri 24 Feb

Ashburnham to Tunbridge Wells -

route B87: Mon 6 Feb

Bus passes can be used on all services
after 9.30am

Mobile Library

stops outside Ashburnham Chapel at

Pont's Green 3.05pm-3.25pm

on Tuesday 14th February

www.eastsussex.gov.uk/libraries

Enquiries 0345 6080196

Phone Renewals 0345 6080195

Battle Area Community Transport

Every Tuesday- 10am The Pound

10.05am Ash Tree Inn

10.25am arrive Battle Abbey Green

12.05pm leave Battle Abbey Green

12.30pm Ash Tree Inn

A Kind of Pilgrimage

I don't know how many of you have had a dream of doing something since you were a child and have been able to make that dream come true? Well, last June I had the chance to do just that when I visited Prince Edward Island, off the coast of Nova Scotia in Canada. When I was a child, my Canadian Godfather, Fred, sent me the classic book, *Anne of Green Gables* by L.M. Montgomery and I immediately fell in love with the world created by Montgomery and the feisty, accident prone heroine at the heart of it. I soon discovered a whole series of 'Anne' books, taking her from childhood, through student life, into married life and ultimately as a mother during WW1 with sons fighting in trenches on the other side of the world. I read and re-read them all - the world that Montgomery conjured up was vivid and compelling to me and I later discovered, as I read more about the author that it was, in many ways, her world that she was writing about. She grew up on Prince Edward Island and spent many happy days in her relative's house on which she modelled the Green Gables farmhouse of her stories. The love of her Island home, her community and the (sometimes eccentric) people in it shone through. Ever since first reading it, I dreamt of visiting the Island and although I had travelled to Canada a few times, I had never made it over to the East Coast till last June when Clive and I travelled there. We spent a week on Prince Edward Island, staying in Charlottetown, but

exploring the island, which is only about 140 miles long. It is a beautiful place, very rural in places with deep red cultivated soil, some of the beaches are red too, others were stunning white sand. The whole experience was wonderful, seeing the places I had only imagined before and of course the highlight was visiting the site of the farmhouse that *Green Gables* was modelled on, a short walk through the woods from L.M. Montgomery's childhood home. The whole site has been developed as a museum but has been done very sensitively and retains the feel of a family home. In the height of the season it is packed with tourists but we were lucky and almost had it to ourselves, we explored the house and walked through the woods around the property, "Haunted Wood" and "Lover's Lane" for those who know the books. We also visited the home L.M. Montgomery was born in and another where she spent many happy holidays with her cousins, (the model for another series of her books.) The Island lived up to all my expectations and discovering more about Montgomery only increased my admiration for this talented woman. Here I am at the Green Gables Farmhouse! 1cvJay Ashworth



Parish Council News

Local news

The planning application for the new village hall was lodged in April 2015 and discussions with Rother DC as the planning authority have been on-going ever since. Thanks to the engagement of a planning consultant those discussions have been brought to a conclusion and a formal amendment to the original application has been submitted. This will need to be advertised by Rother with a view to them making a decision during February 2017.

Once permission is granted that marks the end of the project first stage and also the end of the 'ownership' of the project (and its funding) by the parish council. The council has exhausted the funds it set aside for this project and from here on the funding will come from either fund raising or borrowing. A new organisation will be set up as a registered charity to run the project and ultimately to run the new village hall. There will be plenty to discuss at the Annual Parish Assembly on 27th April!

The parish council budget will have been discussed at the January meeting and key decisions about financial strategy will have been taken including the setting of the precept for 2017/18. This will be reported in full in next month's magazine and the full budget, to be adopted at the meeting on 8th March, will be published on the parish website.

Dates of next meetings

Council meeting: Wed 8 March 2017 at 7.30 pm in the Sports Pavilion.
Planning Committee: Wed 8 February 2017 at 7.30 pm in the Sports Pavilion if there are any new planning matters to consider. Please see the parish website for up to date information.

Members of the public are encouraged to attend these meetings and there is an agenda slot near the start of the meeting for members of the public to address the Council.

Planning applications

Planning applications are now being posted on the parish website.

Brian Holdstock, Clerk to the Council
Email: clerk@ashburnham-penhurst.net
Land line: 01323 832082 with answering machine
Text: 07836 716723
If leaving telephone voice messages be sure to leave your name and a call back number.

Ron Budd

My father was taken ill on Christmas Eve and sadly passed away on January 2nd. After 91 years, although the spirit was still willing, his body had decided it was time to move on to be in the presence of Our Lord Jesus. Mother would like to send thanks for all the messages received from friends at Penhurst and Ashburnham.

My parents returned to the UK from living in Portugal in 1975 and were fortunate to discover that Old Chapel House was on the market which was to become home for the next 22 years. For the first five years it was also home to Sandra and myself and our children Katie, Jenny and Daniel. As a family we all have fond memories of our time in Ashburnham and Penhurst.

Unusually, father followed in son's footsteps... I was a warden at Penhurst from 1977-81 during Paul Broomhall's watch and Dad followed suit from 1990-97 at the end of Paul's watch and then with Roger Burfoot. Our family have had christenings and weddings at Penhurst/Ashburnham but Dad's funeral on 19th January was

the first. He was happy to know that, being buried in Penhurst, he would have an ongoing connection with the church.

After 72 years of marriage, it is no secret that my mother was Dad's first passion but many of you will have seen Dad's second passion... the pre-war "O" gauge train layout in the roof at Old Chapel House. Retirement allowed Dad to indulge in his lifetime interest of model trains but it was only the move to Ashburnham that gave him the time to build a train collection that must have been one of the largest in the country.

After downsizing to a flat in Eastbourne in 1997, my parents continued to worship at Penhurst until the last few years when my father found the driving difficult. However, I know that both my parents considered Penhurst and Ashburnham to be home. Mother, Sandra and I send our warm greetings.

Andrew Budd

February Diary

Wed 1	10am-12pm 7.45pm	PlayCafé Table Tennis	Ashburnham Church Hall Village Hall
Thu 2	10am-1pm 4-5.15pm 7.30pm 8pm	Art Group After School Club Bell Ringing Ashburnham Church Housegroups	Sports Pavilion Village Hall Ashburnham Church Various Locations
Fri 3		Deadline for March Magazine	
Sat 4	8.30am	Men's Breakfast	Ashburnham Place
Sun 5	10.30am 10.30am 6.30pm	All Age Service Holy Communion Evening Service	Ashburnham Church Penhurst Church Ashburnham Chapel
Mon 6	9am	Prayer Time for Church and Community	Prayer Centre
Tue 7	7.45pm	Pub Quiz	Ash Tree Inn
Wed 8	10am-12pm 7.45pm	PlayCafé Table Tennis	Ashburnham Church Hall Village Hall
Thur 9	10am-1pm 4-5.15pm 5.30-6.45pm 7.30pm 8.00pm	Art Group After School Club Yoga Bell Ringing Hour of Prayer	Sports Pavilion Village Hall Sports Pavilion Ashburnham Church Ashburnham Church Hall
Fri 10			
Sat 11			
Sun 12	10.30am 10.30am 6.30pm	Morning Praise with Children's Activities Followed by a shared lunch as it is Paul and Nikki's last Sunday with us Morning Prayer Evening Service	Ashburnham Church Penhurst Church Ashburnham Chapel
Mon 13	9am 9.15-10.30am	Prayer Time for Church and Community Yoga	Prayer Centre Sports Pavilion
Tue 14	3.05-3.25pm 7.15pm 8pm	Mobile Library Filling Station MI	Outside the Chapel Prayer Centre Ash Tree Inn
Wed 15	10am-12pm 12.30pm 7.45pm	PlayCafé Village Lunch Table Tennis	Ashburnham Church Hall Village Hall Village Hall

Thu 16	10am-1pm 4-5.15pm 5.30-6.45pm 7.30pm 8.00pm	Art Group After School Club Yoga Bell Ringing Ashburnham Church House Groups	Sports Pavilion Village Hall Sports Pavilion Ashburnham Church Various Locations
Fri 17			
Sat 18			
Sun 19	10.30am 10.30am 6.30pm	Morning Praise with Children's Activities Holy Communion Evening Service	Ashburnham Church Penhurst Church Ashburnham Chapel
Mon 20	9am 9.15-10.30am 7.30pm	Prayer Time for Church and Community Yoga WI	Prayer Centre Sports Pavilion Village Hall
Tue 21			
Wed 22	10am-12pm 7.45pm	PlayCafé Table Tennis	Ashburnham Church Hall Village Hall
Thu 23	10am-1pm 4-5.15pm 5.30-6.45pm 7.30pm 8pm	Art Group After School Club Yoga Bell Ringing House Groups	Sports Pavilion Village Hall Sports Pavilion Ashburnham Church Various Locations
Fri 24	2pm	Afternoon Book Group	Street Cottage
Sat 25			
Sun 26	10.30am 10.30am 6.30pm	Holy Communion with Children's Activities Morning Prayer Evening Service	Ashburnham Church Penhurst Church Ashburnham Chapel
Mon 27	9am 9.15-10.30am 10.30am 7.30pm	Prayer Time for Church and Community Yoga Coffee Morning Gardening Club	Prayer Centre Sports Pavilion Ashburnham Chapel Ashburnham Church Hall
Tue 28	8pm	Evening Book Group	1 Old School House

*Please note that the inclusion of advertisements for local services in this magazine does not constitute a recommendation.
Readers are advised to make their own enquiries to ensure good service.*